



Computer Aided Manufacturing Software

CS MERCURIO

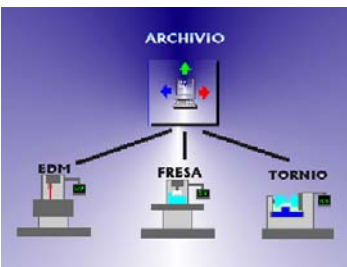
Windows native program



CS Mercurio is a **WINDOWS™** native program oriented to the transmission of CNC files on a Serial network; it is enabled to serve simultaneously until 32 peripherals (base 2, 4, 8), connected with one only archive computer, through ports **RS-232, RS-422, RS-485 e CURRENT LOOP**.

WINDOWS™ joins to the high performances the friendly use of Dialog Box and Icons.

Simultaneous control of 32 CN



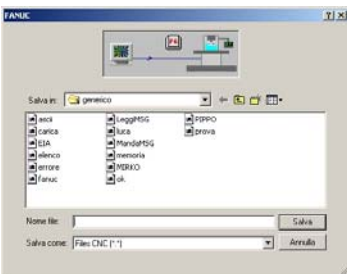
Main functionalities :

Monitoring of every operation



- Continuous monitoring of the current operations and display, in real time, of the state of each active connection.
- High level of automation of the I/O processes.
- Nevertheless it is possible the manual intervention in order to send one or more selected Files.
- A generic DNC cooperating with a customized DNC as **HEIDENHAIN™, MAHO™, CB-FERRARI™, Z16, Z32.....**, directly manages the transmission of files 3D (high dimensions) while the milling operation is executed.
- Concentration in only one archive of all the CNC working Files of a big mechanical workshop.
- Every transmission is directly managed from the Control Panel of the CNC; every operator acts directly only on the Control Panel of the connected CNC. The operator sends the request of transmission from its working place.
- It allows the preservation of the archive PC from external handling.
- **Mercurio** deletes the loss of time in multiple transmissions because it manages in **MULTI-TASKING** more processes in one time.
- Every operator seems to be the only user of the archive PC.
- No slowdown is pointed out in multiple use of DNCs, the PC seems to be devoted to a single operator.
- Available utilities allow the visualization, directly on the display of the CNC, of informations as messages to the operator an the list of the devoted directory on the archive PC.
- Only one supervisor is enabled, on-line, to monitor continuously the I/O activity of all the files from CNC and from PC and to send messages to the Machining Tool operator.
- Possible problems are advised in real-time, all the informations, connected to the involved transmission, are archived in a **report-file** enabling the immediate check of the work-state of each Machining Tool.
- It is very easy to configure and customize the System, and to add new connections.
- **Mercurio** is enabled to the automatic loading of more files used in palletized machining.
- **Mercurio** is enabled, by special option, to the automatic conversion of the known CNC File for a different CNC before the transmission.
- **Mercurio** can be linked with some others **CAM SOFT** programs like **CNCAssistant** and **CNCEditor**, orieted programs for specific management of CNC files.

Mode : Automatic or Manual



Quick and sure configuration





Computer Aided Manufacturing Software



CAM SOFT puts at disposal of its Customers its solid experience in the solutions of problems in PCs connection, PC with machining tools connection, managing and multiple transmission of CNC Files to machining tools.

CAM SOFT carry out network facilities for RS-232, RS-422, RS-485 and CURRENT LOOP assuring the reduction of every risk of interference. CAM SOFT uses the more adjoined technics in cabling and assembling.

Since 1982 **CAM-SOFT** designs and realizes LAN Network and systems engineering, supplementing its products and services with **Hewlett-Packard™** hardware.



Windows® is a Microsoft registered trademark
Pentium® is an Intel registered trademark

Our Company

CAM-SOFT has been working to realize technical informatic system since 1982, with the support of Hewlett-Packard hardware and software.

CAM-SOFT offers a solid experience in N.C. for the solution of hardware and software problems in the CAD/CAM area.

- ⇒ Organizational and technical advice
- ⇒ System supply
- ⇒ Customized software
- ⇒ Services

Services

A comprehensive range of support services are available both for design (CAD) and manufacturing (CAM).

- ⇒ Technical advice
- ⇒ Customer training
- ⇒ Software update
- ⇒ On-site and phone support
- ⇒ Customized support

CAM SOFT snc di dott. Marco Campironi & C.
Via Piemonte, 3
20064 GORGONZOLA (MI) ITALIA
Tel +39-02 9514748 Fax / Modem +39-02 9517665
e-mail : camsoft@camsoft.it
C.C.I.A.A. Milano n. 1098418 - Part. I.V.A. e C.F. n. 05054550156